



## St. Marks Road, Maidenhead

Three-bedroom detached house with parking

Guide Price £670,000

Individual attention, expert advice, positive action

[www.robinsonstateagents.co.uk](http://www.robinsonstateagents.co.uk)

## Overview

- Three-bedroom detached family house
- Private, South facing garden
- No onward chain
- Garage
- Downstairs WC
- Scope to extend (STPP)
- Off-street parking
- EPC rating - E
- Council tax band F - currently £2302.35 for 2023/24
- Virtual viewing available

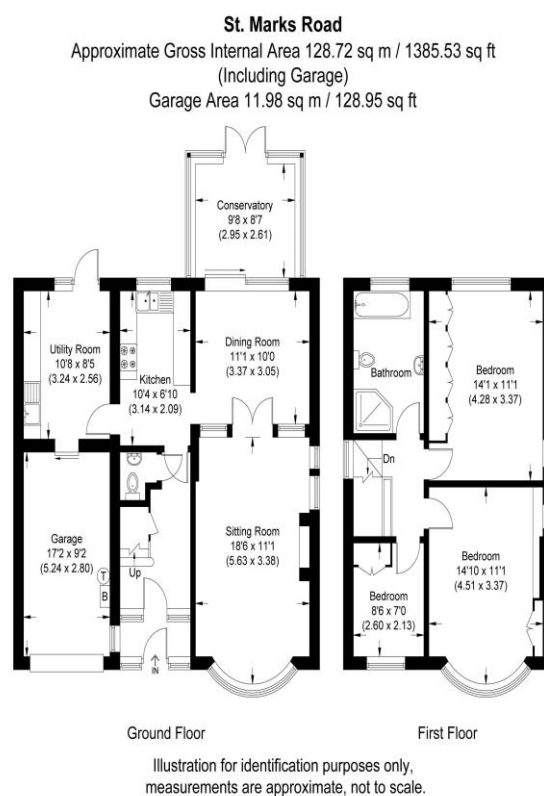
## Selling your home?

If you are considering selling your home please contact us today for your no obligation free market appraisal.

Our dedicated and friendly team will assist you 6 days a week. Get in touch today!

**01628 637600**

[weaimtolisten@robinsonestateagents.co.uk](mailto:weaimtolisten@robinsonestateagents.co.uk)



## Directions

From Maidenhead town centre head drive up Castle Hill (A4) and at the first mini-roundabout turn right into St Marks Road where the property can be found on your left hand side.

| Energy Efficiency Rating |               |         |           |
|--------------------------|---------------|---------|-----------|
| Score                    | Energy rating | Current | Potential |
| 92+                      | A             |         |           |
| 81-91                    | B             |         |           |
| 69-80                    | C             |         |           |
| 55-68                    | D             |         |           |
| 39-54                    | E             |         |           |
| 21-38                    | F             |         |           |
| 1-20                     | G             |         |           |

Whilst these details are thought to be correct, their accuracy cannot be guaranteed and do not form part of any contract. It should be noted that we have not tested any fixtures, fittings, equipment, apparatus or services, therefore we cannot verify that they are in working order or fit for purpose. Solicitors should be used to confirm that any moveable items described within these details are in fact part of the sale agreement. While we try to ensure measurements are correct they are not guaranteed and purchasers are advised to take their own measurements before ordering any fixtures or fittings.